



**REGIONAL SPECIALISED METEOROLOGICAL CENTRE-TROPICAL CYCLONES, NEW DELHI  
TROPICAL WEATHER OUTLOOK**

**DEMS-RSMC TROPICAL CYCLONES NEW DELHI DATED 08.12.2024**

**TROPICAL WEATHER OUTLOOK FOR THE NORTH INDIAN OCEAN (THE BAY OF BENGAL AND THE ARABIAN SEA) VALID FOR THE NEXT 168 HOURS ISSUED AT 0600 UTC OF 08.12.2024 BASED ON 0300 UTC OF 08.12.2024.**

**BAY OF BENGAL:**

Yesterday's Low pressure area over the Equatorial Indian Ocean & adjoining southeast Bay of Bengal persisted over the same region at 0300 UTC of today, 8<sup>th</sup> December 2024. The associated cyclonic circulation extended up to middle tropospheric levels. It is likely to move west-northwestwards & become more marked during next 24 hours. It is very likely to continue to move west-northwestwards thereafter and reach over southwest Bay of Bengal off Sri-Lanka – Tamil Nadu coasts around 11th December.

Scattered low and medium clouds with embedded intense to very intense convection lay over south Bay of Bengal and Andaman Sea. Scattered low and medium clouds with embedded moderate to intense convection lay over East central Bay of Bengal and Andaman Sea and isolated weak to moderate convection over rest Bay of Bengal.

**\*PROBABILITY OF CYCLOGENESIS (FORMATION OF DEPRESSION) DURING NEXT 168 HRS:**

24 HOURS	24-48 HOURS	48-72 HOURS	72-96 HOURS	96-120 HOURS	120-144 HOURS	144-168 HOURS
NIL	NIL	NIL	NIL	NIL	NIL	NIL

**\*NOTE: EVERY 24HR FORECAST IS VALID UPTO 0300 UTC (0830 IST) OF NEXT DAY**

**ARABIAN SEA:**

Yesterday's cyclonic circulation over southwest & adjoining southeast Arabian Sea has become less marked over same region at 0300 UTC of today, 8<sup>th</sup> December, 2024.

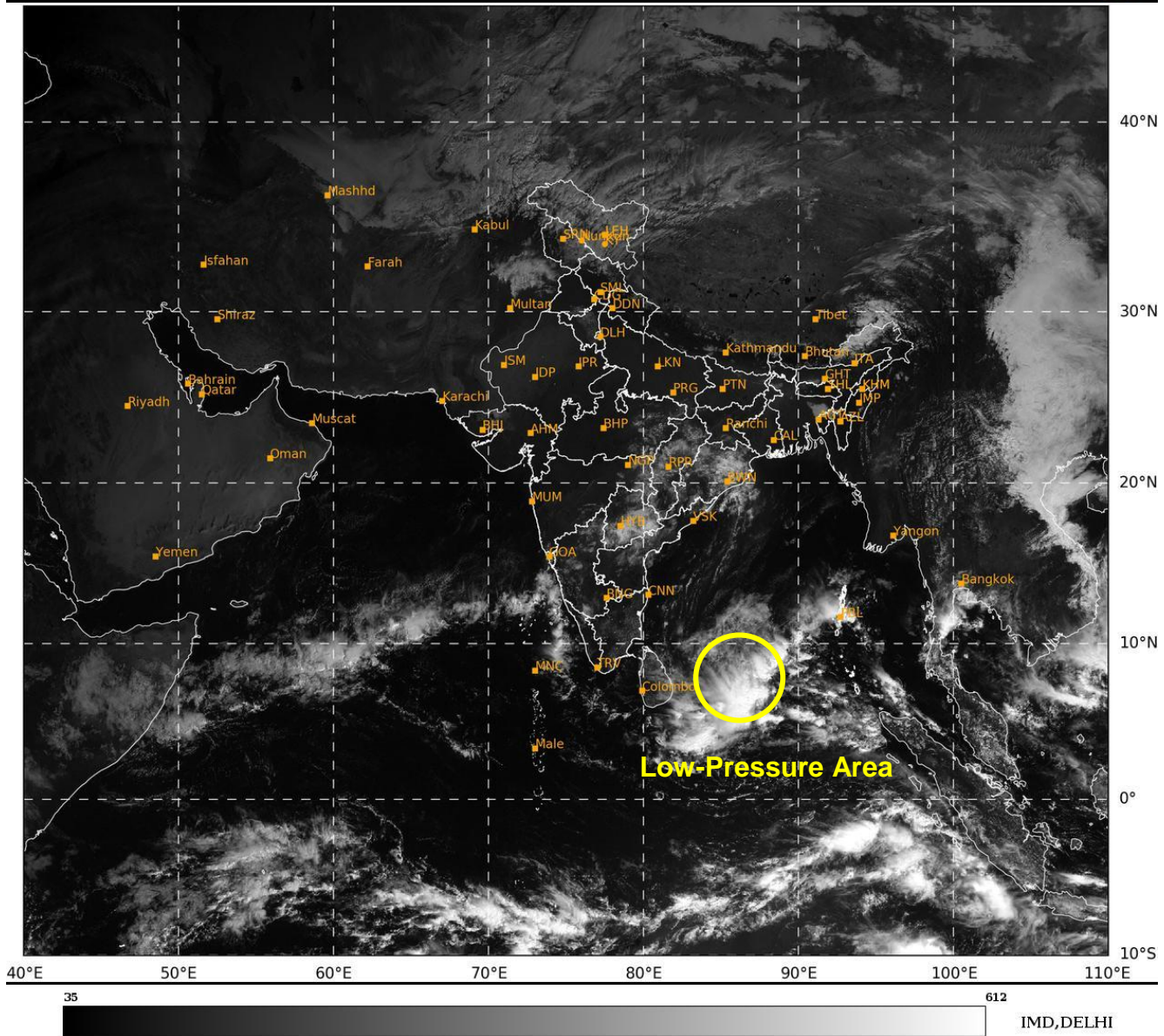
Scattered low and medium clouds with embedded moderate to intense convection lay over south Arabian Sea adjoining Lakshadweep island area.

**\*PROBABILITY OF CYCLOGENESIS (FORMATION OF DEPRESSION) DURING NEXT 168 HRS:**

24 HOURS	24-48 HOURS	48-72 HOURS	72-96 HOURS	96-120 HOURS	120-144 HOURS	144-168 HOURS
NIL	NIL	NIL	NIL	NIL	NIL	NIL

**\*NOTE: EVERY 24HR FORECAST IS VALID UPTO 0300 UTC (0830 IST) OF NEXT DAY**

**REMARKS: NIL**



Cloud distribution: (a) Isolated: <25%, Scattered:25-50%, Broken: 51-75%, Solid:>75%, Convection Intensity: (a) Weak: Cloud Top Temperature (CTT) >-25°C, (b) Moderate: CTT: - 25°C to -40°C, (c) Intense: CTT: - 41°C to -70°C and (d) Very Intense: : Less than -70°C  
PROBABILITY OF CYCLOGENESIS (FORMATION OF DEPRESSION):NIL: 0%, LOW: 1-33%, , MODERATE: 34-66% AND HIGH: 67-100%  
This is a guidance Bulletin for WMO/ESCAP Panel Member countries. Visit respective National websites for Country specific Bulletins